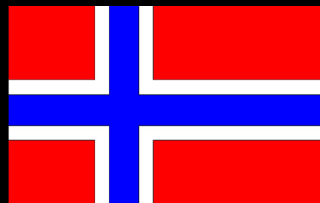


The University of Washington-University of Bergen Faculty Exchange Program



Celebrating Global Partnership



Bergen Exchange Program celebrates the UW's oldest partnership with a global university. The two campuses, with parallel selection processes, work in tandem each year to select, host, and welcome visiting scholars.

The opportunity to live, lecture, and conduct research in Seattle's sister city of Bergen extends to faculty in all disciplines, and 185 faculty from both campuses have participated since the founding of the exchange in 1979. The exchange also extends to visiting scholars who are in the advanced stages of their graduate training.

The Bergen Exchange Program facilitates the sharing of ideas, and the development of research networks. Many of the participants publish books, articles and joint projects through enduring professional connections resulting from the exchange. The community benefits from the enduring global partnership and the opportunity to share ideas with our Norwegian colleagues.

100 Vikings

Please help us secure the future of the Bergen Exchange. This past year was a clear example of how economic downturns have significant impact on public universities – both in the U.S. and abroad – especially in terms of how much institutional funding can be directed to programs like the Bergen Exchange. To ensure that exchange between these two great universities continues long into the future, we're looking for 100 Vikings to help us create a permanent endowment supporting the Bergen Exchange. Each Viking contribution of \$1,000 (which can be paid in installments over 5 years) will get us closer to this goal – and ultimately support faculty and advanced graduate students conducting research in Norway.

For more information contact:
Christine Ingebritsen, Chair
UW Bergen Exchange Program, Box 353420
ingie@u.washington.edu
(206) 543-0675



Areas of research fostered through the University of Washington-University of Bergen Faculty Exchange Program

| | |
|---------------------------------------|---|
| Addictive Behaviors Research | Linguistics |
| Alcohol and Drug Abuse | Marine Affairs |
| Anthropology | Mathematics |
| Art History | Mechanical Engineering |
| Atmospheric Sciences | Medicine |
| Biochemistry | Molecular Biology |
| Botanical Institute | Music |
| Botany | Near Eastern Languages and Civilization |
| Chemistry | Neurological Surgery |
| Communications | Nursing |
| Comparative Literature | Oceanography |
| Computer Science | Pediatrics |
| Dentistry | Pharmacology |
| Economics | Philosophy |
| Education | Physics |
| Electrical Engineering | Political Science |
| Endodontics | Psychology |
| Engineering | Public Affairs |
| English | Quaternary Research |
| Environmental and Occupational Health | Romance Language & Literature |
| Environmental Science | Scandinavian Language & Literature |
| Epidemiology | Scandinavian Studies |
| Finance | Slavic Languages & Literature |
| Fisheries | Social Work |
| Fisheries and Marine Biology | Sociology |
| Geography | Statistics |
| Geophysics | Surgery |
| Germanics | Suzzallo Library |
| History | Urban Horticulture |
| International Health | Urban Planning |
| International Studies | Women Studies |
| Law | Zoology |
| Library Science | |